



Over 90 Years Of Quality Foodservice  
Products And Service

Item No. \_\_\_\_\_  
Project \_\_\_\_\_  
Quantity \_\_\_\_\_

## Wells Electric Half Size Convection Oven

**Model: OC1**



Model OC1

### APPLICATION

OC1 commercial, heavy-duty, half-size Convection Oven is constructed of stainless steel inside and out. OC1 is supplied with an insulated left hand opening door and five fully adjustable, nickel plated racks. At only 30 1/8 inches wide, OC1 delivers big performance in a compact package.

### FEATURES

- Two-speed fan for products sensitive to air velocity
- Ergonomic door handle
- Five fully adjustable racks for 13" x 18" pans
- Heavy-duty, 6" stainless steel legs
- Heavy-duty power cord with NEMA 6-30P cord cap
- Durable, easy to clean stainless steel interior and exterior
- OC1 is Underwriters Laboratories, Inc. listed, and meet NSF standards. A one-year warranty against defects covers parts and labor.

### PERFORMANCE FEATURES

- OC1 has a rated output of 5.0 KW (208 volts) and 5.6 KW (240 volts), 60 Hz, single phase.
- Suitable for baking all types of bread, pizza, biscuits, cookies, pastries, meat, fish and fowl.
- Convection Oven is simple to operate: Temperature settings are selected by rotating the temperature control knob.
- Temperature range is 100°F to 450°F and is controlled by a solid state temperature controller.

- Time selection can be quickly increased or decreased during a cook cycle by rotating the timer knob. Timer range is 0 to 12 hours. Just press the START TIMER key to begin.
- Provides five easily programmed menu keys for fast entry of time and temperature settings of commonly prepared items.

### OPTIONS/ACCESSORIES

- Caster Set (set of four), 21330
- Stacking Kit allows one oven to be stacked on top of another. If casters are used, they must be installed on the lower oven, 21342
- Oven Rack, replacement, 21376
- Venting & Stacking Kit, 22882

### PRODUCT WARRANTY

One year parts & one year labor

### COOKING SPECS

Oven Temperature Range:	100°F - 450°F (38°C - 232°C)	
Pre-Heat Time to 375°F (stabilized temperature)	15 minutes	
Typical Product	Temperature	Time (5 Racks)
Rolls (60)	300°F	16 min.
Sugar Cookies	300°F	15 min.
Fish Sticks	350°F	15 min.
Baked Shrimp (stuffed)	400°F	7 min.
Chicken (Breasts)	350°F	30 min.
Idaho Potatoes (120)	450°F	40 min.
Macaroni & Cheese	350°F	30 min.

**NOTE: Specifications are subject to change without notice and are not intended for installation purposes.**



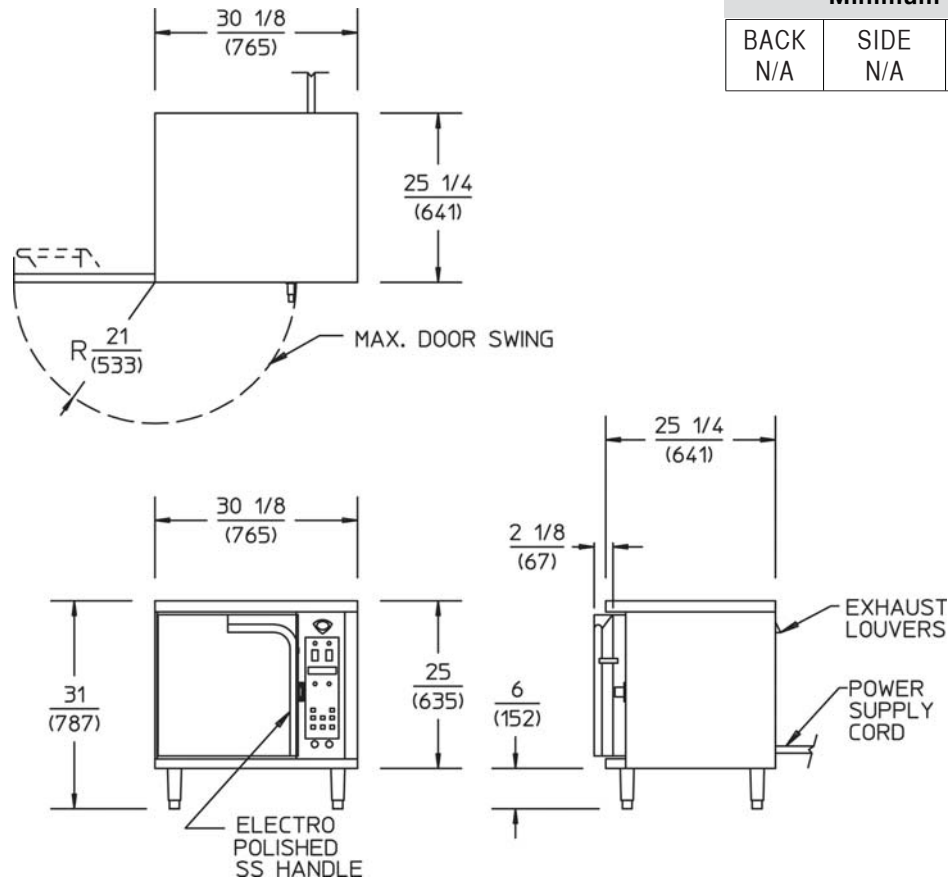
Sheet No. WELLSOC1-1061

**Wells Bloomfield** • 10 Sunnen Dr. St. Louis, MO 63143 U.S.A.

Phone: (888) 356-5362 • Fax (800) 264-6666 • Canada & Export Phone : (314) 781-2777 • Canada & Export Fax (314) 781-3636  
www.wellsbloomfield.com © 2011 Wells Bloomfield• Printed in the U.S.A.

**Wells Electric  
Half Size Convection Oven**

**Model: OC1**



Minimum Clearance			
BACK	SIDE	BOTTOM	FRONT
N/A	N/A	N/A	N/A

Model Number	W x D x H Inches (MM)	Voltage	Watts	AMPS	Supply Cord	Approx. Weight lbs. (installed) LBS (KG)	Approx. Weight lbs. (Shipping) LBS (KG)
OC1	30-1/8 x 25-1/4 x 31 (1189 x 694 x 921) <i>height includes 6" legs</i>	208V 240V	5,000 5,600	24.0 24.0	NEMA 6-30P	243 (110)	253 (115)
	<b>INTERIOR DIMENSIONS</b> W x D x H (Inches) (MM) 15-3/8 x 20-1/2 x 20 (391 x 514 x 508)						

NOTE: Specifications are subject to change without notice and are not intended for installation purposes. See installation instructions prior to installing the unit.

**CAD SYMBOLS & PRICING**



AutoQuotes



**Wells Bloomfield** • 10 Sunnen Dr. St. Louis, MO 63143 U.S.A.

Phone: (888) 356-5362 • Fax (800) 264-6666 • Canada & Export Phone : (314) 781-2777 • Canada & Export Fax (314) 781-3636

www.wellsbloomfield.com © 2011 Wells Bloomfield• Printed in the U.S.A.

Due to periodic changes in designs, methods, procedures, policies and regulations, the specifications contained in this sheet are subject to change without notice. While Wells exercises good faith efforts to provide information that is accurate, we are not responsible for errors or omissions in information provided or conclusions reached as a result of using the specifications. By using the information provided, the user assumes all risks in connection with such use.