

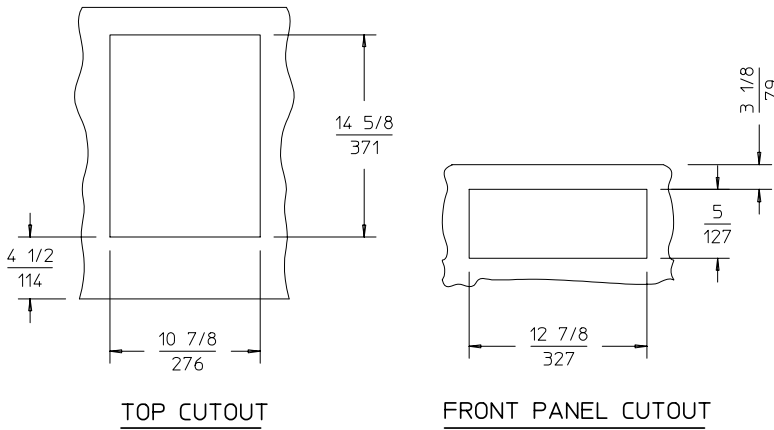
ELECTRICAL

BUILT-IN FOOD WARMERS

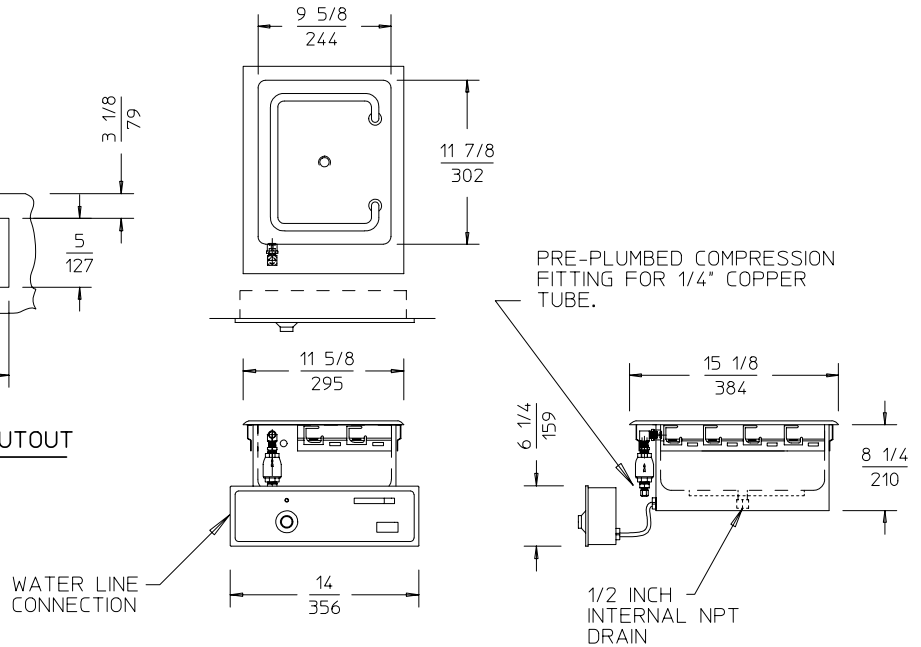
MODEL HSW-6DAF
HALF-SIZE WARMER W/AUTOFILL

MODELS	VOLTS	AMPS	WATTS	PHASE	FIELD WIRING GAUGE	TEMP. RATING
HSW-6DAF	208	4.3	900	SINGLE	14 AWG CU	90°C
HSW-6DAF	240	5.0	1200	SINGLE	14 AWG CU	90°C

CUTOUT DETAILS



PRODUCT DIMENSIONS



CLEARANCES

MINIMUM CLEARANCE REQUIRED UNIT TO THE NEAREST SURFACE			
BACK	SIDE	BOTTOM	FRONT
1 (25)	2 (51)	6 3/4 (171)	4 1/2 (114)

INSTALLATION INSTRUCTIONS

INSTALLER MUST MEET CONDITIONS OF ACCEPTABILITY OUTLINED BELOW UPON INSTALLATION:

1. Required installation clearances:
 Wooden and Metal Installation: DO NOT install closer than 4 1/2 inches to front wall, 1 inch to back and 2 inches to side wall and 6 3/4 inches to surface below the unit. If the control box is located below the unit, the front clearance may be 1 inch.

2. Unit shall be accessible for servicing from the bottom.

3. If storage is to be used underneath the unit, it is recommended that a baffle be placed 8 1/2 inches below the unit to avoid contact with elevated temperatures.

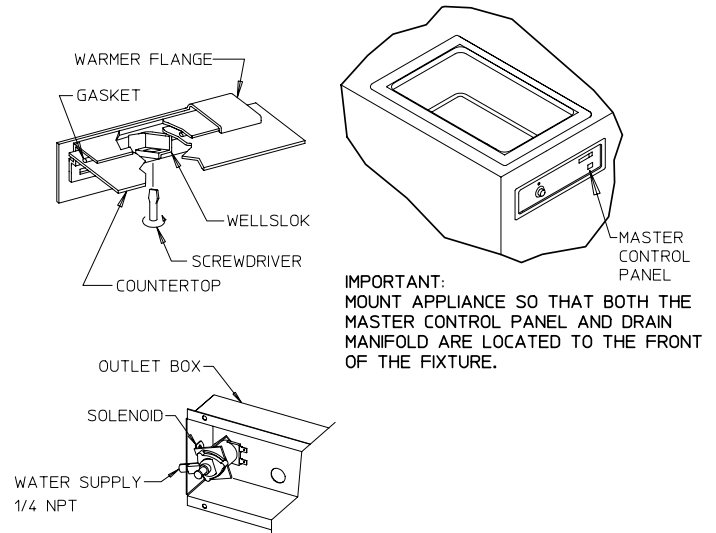
4. For water and waste connections: This appliance is to be installed to comply with the applicable federal, state, or local plumbing codes.

TO FABRICATE:

- Lay out cutout dimensions on countertop and front apron.
- Lay out and fabricate control panel holes in counter apron using the control box as a template.
- Cut out holes (Note: "stiffening" around perimeter of countertop cutout is not normally required).

TO INSTALL:
IMPORTANT - DO NOT disconnect lead wires from the Master Control Panel when making installation.

- Tilt and pass Control Panel and electrical box through the countertop cutout, then through the apron cutout. Lower warmer into countertop cutout and position. **RECOMMENDATION:** Before final seating of warmer to countertop, apply a bead of silicone adhesive/sealant to the underside of gray gasket material supplied on the mounting flange.
- From underneath, insert screwdriver into slots in Wellslock frame and twist ears outward (clockwise) as required to secure flange tightly to countertop.
- Mount Control Box to apron cutout as shown in drawing.
- Mount Control Panel onto electrical box using the screws supplied.



WELLS MANUFACTURING CO.
HSW-6DAF AUTO FILL WITH STAINLESS STEEL
WATER SOLENOID VALVE

