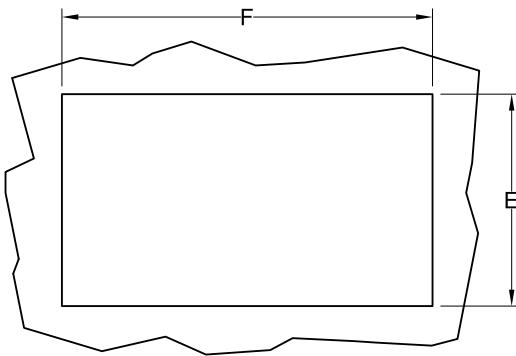


INSTALLATION INSTRUCTIONS

SHEET 1 OF 2

HOT & COLD PAN
EXTRA CAPACITY 4/3rd PAN MODELS
HRCP7143
HRCP7243
HRCP7343
HRCP7443
HRCP7543
HRCP7643

CUTOUT DETAILS



MINIMUM CLEARANCE REQUIRED FROM UNIT TO THE NEAREST SURFACE			
BACK	SIDE	BOTTOM	FRONT
$\frac{0}{[0]}$	$\frac{0}{[0]}$	N/A	$\frac{3}{[76]}$

1/4" NPT WATER LINE CONNECTION

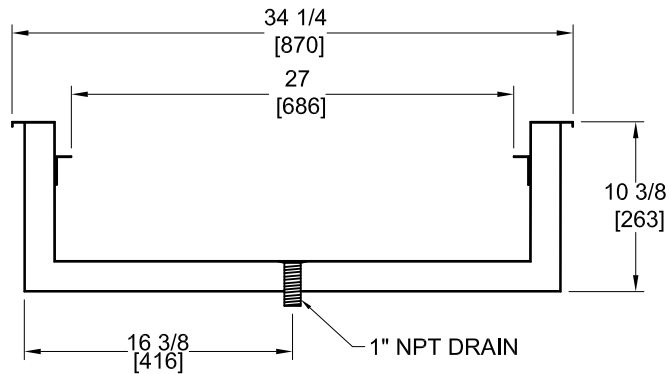
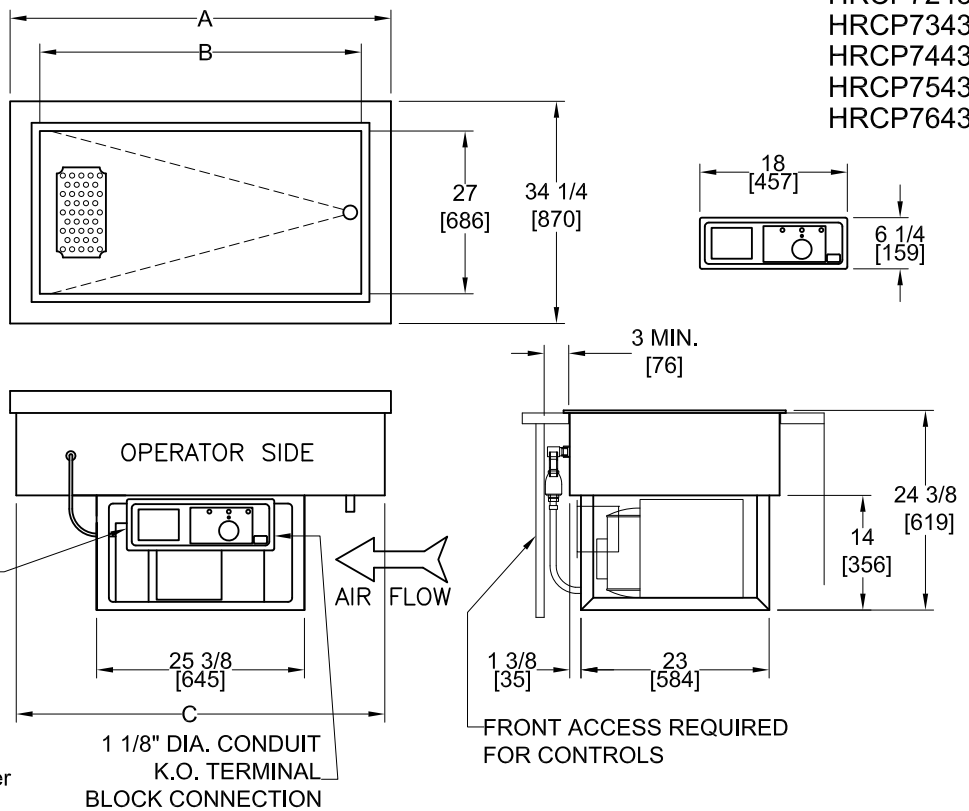
INSTALLER MUST MEET CONDITIONS OF ACCEPTABILITY OUTLINED BELOW UPON INSTALLATION:

1. This unit may be installed in stainless steel, wood, Formica, or Corian tables and countertops.
2. This unit requires a 120/208-240 volt single phase power supply connection and a drain connection.
3. When installing the unit, it is essential to provide side openings twice the surface area of the condenser for adequate air circulation. Louvered grills with proper size may be placed in each opening.

TO INSTALL UNIT:

1. Lay out "cutout" dimensions on countertop or table.
2. Cut out hole and add stiffeners to support weight of unit if necessary. Countertop must be flat and level before installing cold pan.
3. Apply a generous bead of silicone sealant to underside of mounting flange before setting unit into cutout. Remove any excess sealant from top flange and countertop.
4. Connect 1 inch drain to drain pan or floor drain. Consult local codes for approved drain connections.
5. Remove thermostat knob and recessed control panel from control box for access to terminal block.

PRODUCT DIMENSIONS INCHES [MM]



CROSS-SECTION OF HOT & COLD PAN

MODEL NUMBER	OVERALL DIMENSIONS			CUT-OUT DIMENSIONS		WARMER ELECTRICAL SPEC.				REFRIGERATION ELECTRICAL SPEC.								
	DIM. A	DIM. B	DIM. C	DIM. E	DIM. F	VOLTS	KW	AMPS	PHASE	VOLTS	HP	AMPS SINGLE PHASE			REFRIGERANT		DESIGN PRESSURE	
												LRA	MFS	L1-N	TYPE	QTY	HIGH	LOW
HRCP7143	19 1/8 [486]	11 7/8 [302]	17 5/8 [448]	33 [838]	17 7/8 [454]	208/240	1.9/2.5	9.0/10.4	SINGLE	115	1/4	38	15	3.9	R134A	28 oz	440	162
HRCP7243	32 3/4 [832]	25 1/2 [648]	31 1/4 [794]	33 [838]	31 1/2 [800]	208/240	1.9/2.5	9.0/10.4	SINGLE	115	1/4	38	15	3.9	R134A	28 oz	440	162
HRCP7343	46 1/2 [1181]	39 1/4 [997]	45 [1143]	33 [838]	45 1/4 [1149]	208/240	3.8/5.0	14.4/16.7	SINGLE	115	1/3	39	15	6.2	R404A	24 oz	500	174
HRCP7443	60 1/4 [1530]	53 [1346]	58 3/4 [1492]	33 [838]	59 [1499]	208/240	3.8/5.0	18.1/20.8	SINGLE	115	1/2	41	15	7.0	R404A	32 oz	500	174
HRCP7543	74 [1880]	66 3/4 [1695]	72 1/2 [1841]	33 [838]	72 3/4 [1848]	208/240	6.0/8.0	28.9/33.3	SINGLE	115	3/4	43	30	15.8	R404A	54 oz	500	174
HRCP7643	87 3/4 [2229]	80 1/2 [2045]	86 1/4 [2191]	33 [838]	86 1/2 [2197]	208/240	6.0/8.0	28.9/33.3	SINGLE	115	3/4	43	30	15.8	R404A	54 oz	500	174



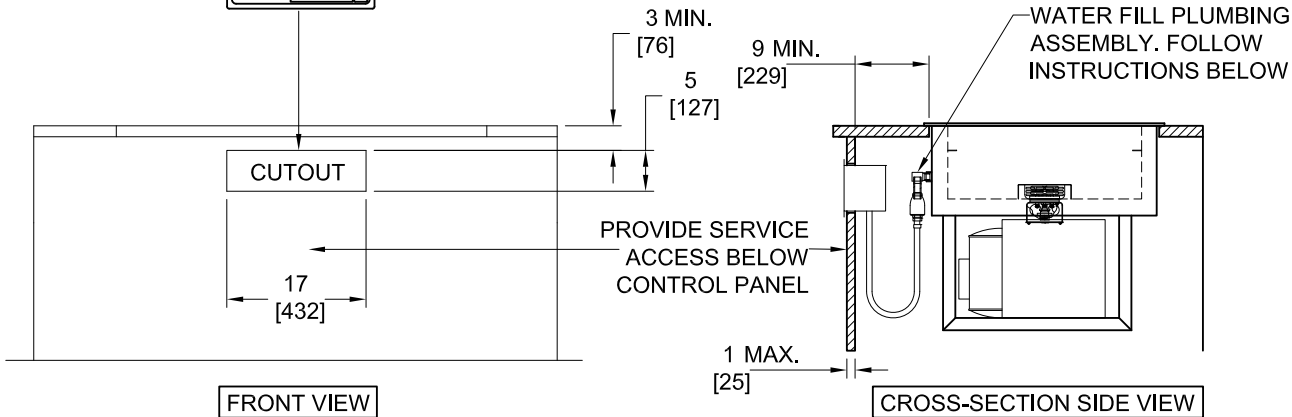
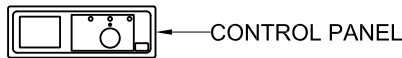
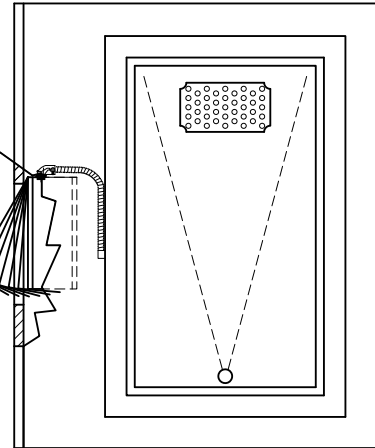
WELLS BLOOMFIELD

10 SUNNEN DRIVE, ST. LOUIS MO 63143

2M-Z16996 REV (-)

HOT & COLD PAN
EXTRA CAPACITY 4/3rd PAN MODELS
HRCP7143
HRCP7243
HRCP7343
HRCP7443
HRCP7543
HRCP7643

ILLUSTRATION OF ELECTRICAL BOX POSITIONING AND ANGLE OF ROTATION IN ROUTING THRU CUTOUT



REMOTE CONTROL PANEL INSTALLATION

1. Layout control panel cutout in the front apron.
NOTE: Control panel assembly is provided with extra length of flexible conduit and electric wiring. This option allows for installation of the controls outside the enclosure for easy access.
2. Remove thermostat knob and recessed control panel
3. Remove control box assembly from framework. Release wiring conduit from wire ties and retainers.
4. Install control box by routing it through the cutout.
5. Fasten control box by using six (6) screws provided.

PLUMBING INSTALLATION

NOTE: Plumbing connections must be completed after the unit is lowered onto the counter cutout. The water fill hose with check valve assembly is shipped disconnected from the tank for ease of setting unit into the cutout at installation.

1. Apply pipe sealant to the water fill tank fitting and attach the pre-assembled check valve assembly.
2. Attach water fill hose to hose fitting with hose clamp.
3. Connect 1/4NPT water supply and shut off valve to solenoid valve in control box. Note: Maximum pressure 120 psi. Maximum temperature 120°F.
4. A drain valve is supplied with the unit. It is the discretion of the installer to locate the position of the handle. Connect 1 inch drain to drain pan or floor drain. Valve access must be provided for drain pan.

ELECTRICAL INSTALLATION

1. NOTE: Make sure power supply line is de-energized before wiring appliance.
Unit operates on 120/208-240 volt single phase system. Use #8AWG minimum 60°C supply leads only. Make certain that 'L1 to L2' reads 208 to 240 VAC and 'L2 TO N' reads 120 VAC. Do not connect to a circuit operating at more than 150 volts to ground.
A backflow preventor check valve is incorporated in unit between water fill solenoid and pan.
Local codes may require additional vacuum break device.
2. Bring supply leads through 1 1/8" conduit K.O. to terminal block pre-installed in the electrical box.
3. Install control panel and control knob.

NOTE: INSTALLATION MUST MEET LOCAL PLUMBING AND ELECTRICAL CODES



WELLS BLOOMFIELD

10 SUNNEN DRIVE, ST. LOUIS MO 63143