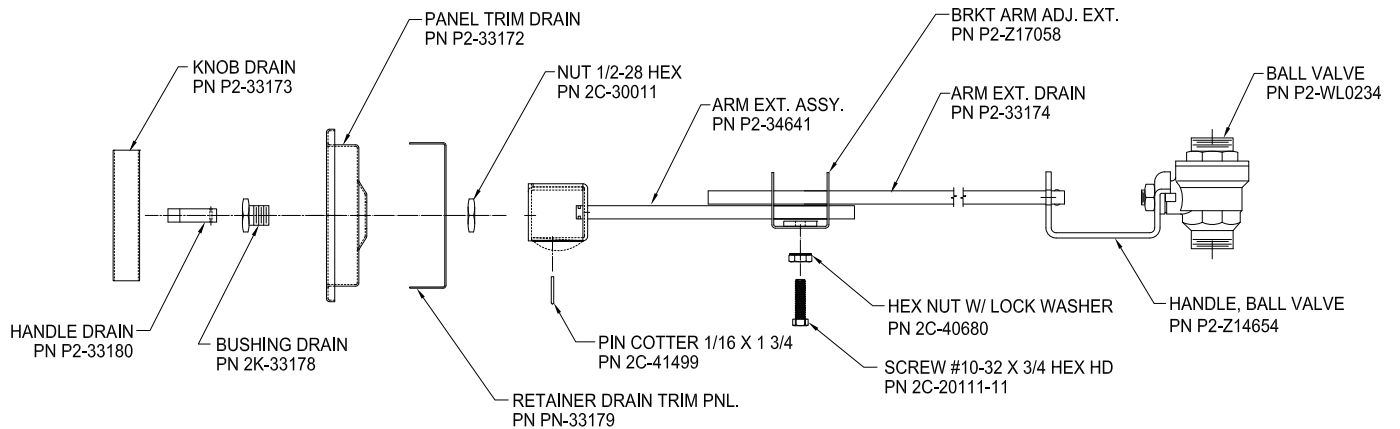
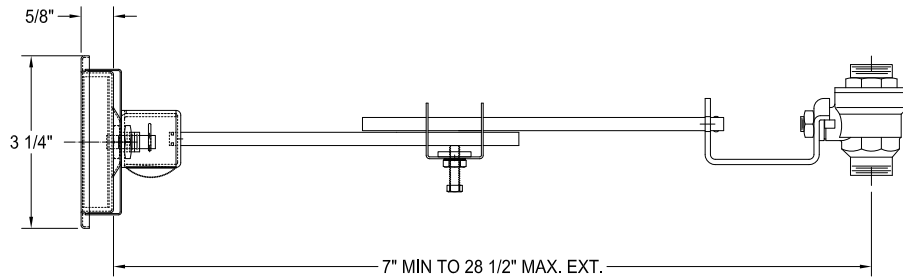
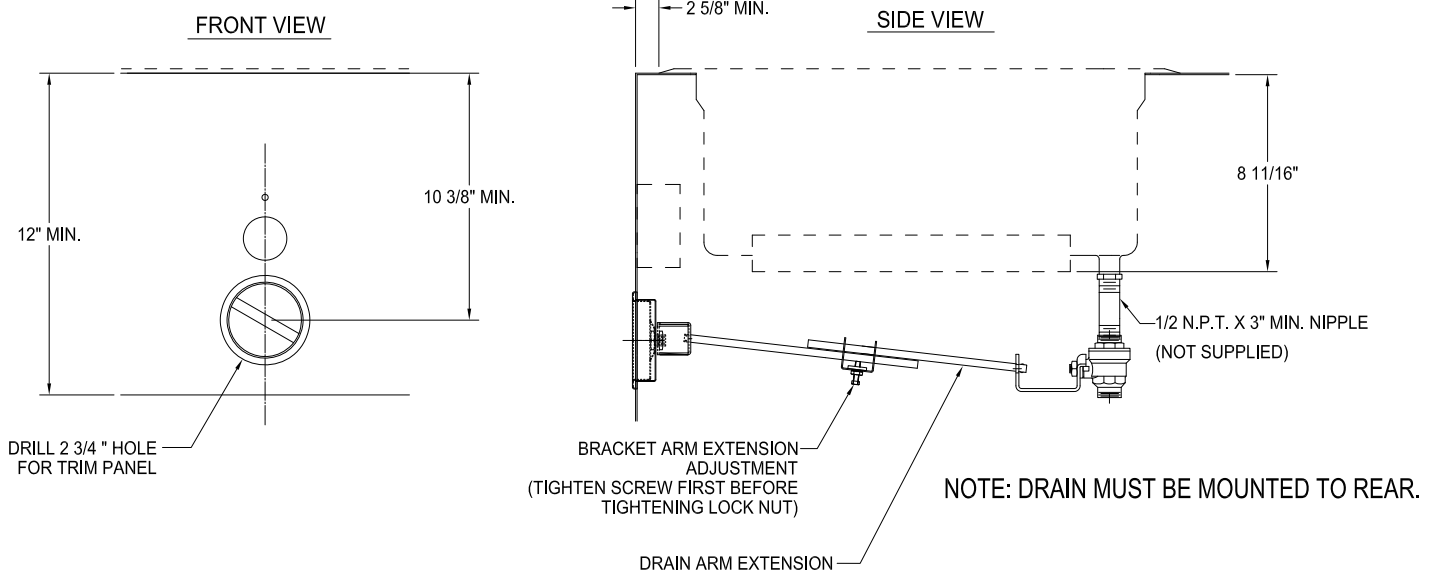
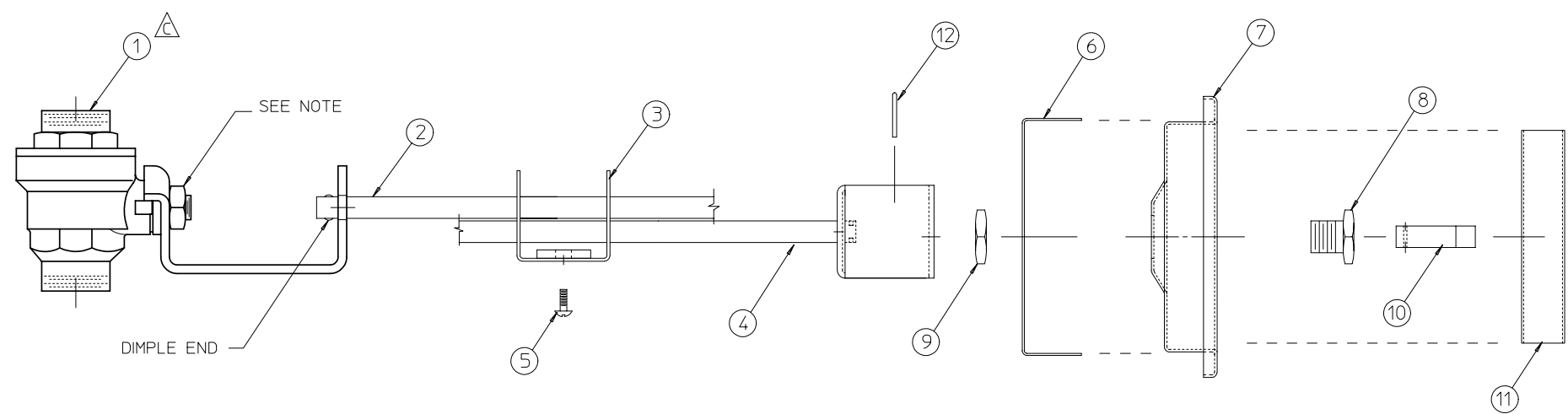


INSTALLATION INSTRUCTIONS FOR SS-206 DRAIN VALVE ASSY. (PRODUCT NO. 20385)




WELLS BLOOMFIELD
10 SUNNEN DRIVE, ST. LOUIS MO 63143

NOTE: REMOVE NUT ON ITEM 1 TO REMOVE THE BRACKET, INSERT ITEM 2 TO BRACKET AND RE-ASSEMBLE BACK TOGETHER.



12	41499	PIN CUTTER 1/16 X 1 3/4 ALUM	1
11	33173	KNOB DRAIN SS206D	1
10	33180	HANDLE DRAIN SS206D	1
9	30011	NUT 1/2-28 HEX MS	1
8	33178	BUSHING DRAIN PNL SS206D	1
7	33172	PANEL TRIM DRAIN SS206D	1
6	33179	RETAINER DRAIN TRIM PNL	1
5	31730	SCREW #8-32 X 1/2 TR HD	1
4	34641	ARM EXTENSION ASSY. DRAIN	△1
3	33175	BRACKET ARM ADJ. EXT.	1
2	33174	ARM EXTENSION DRAIN	△1
1	△306694	BALL VALVE ASSY.	1
ITEM	PART NO.	DESCRIPTION	QTY

C	SEE ECN-12941	L.M	DTL	G.C	10-14-05
B	SEE ECN-4649		R.W	G.C	10-19-88
A	ENG. REL. ECN-4158		J.B	G.C	01-22-88
ISSUE	WAS	BY	APP	DATE	
DO NOT SCALE DWG.		REVISIONS			
TOL. UNLESS NOTED	PART NAME DRAIN VALVE EXT. KIT				
DEC. .0 ±.030 .00 ±.020 .000 ±.005	USED ON SS-206D				
SCALE NONE	DWN. DTL	ENG. DVP	CKD. G.C		
ANG. ±1°	MATERIAL				
 BLOOMFIELD VERDI, NV.					PART NO. * 20385