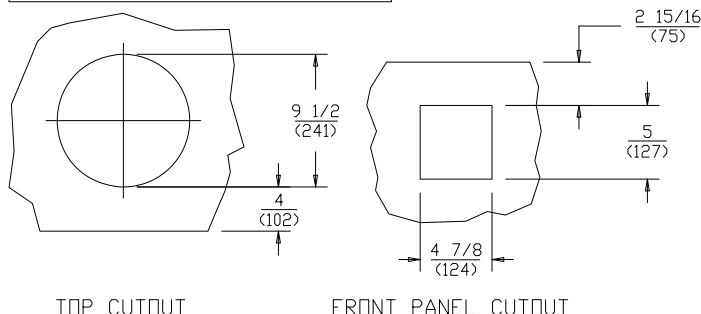


ELECTRICAL

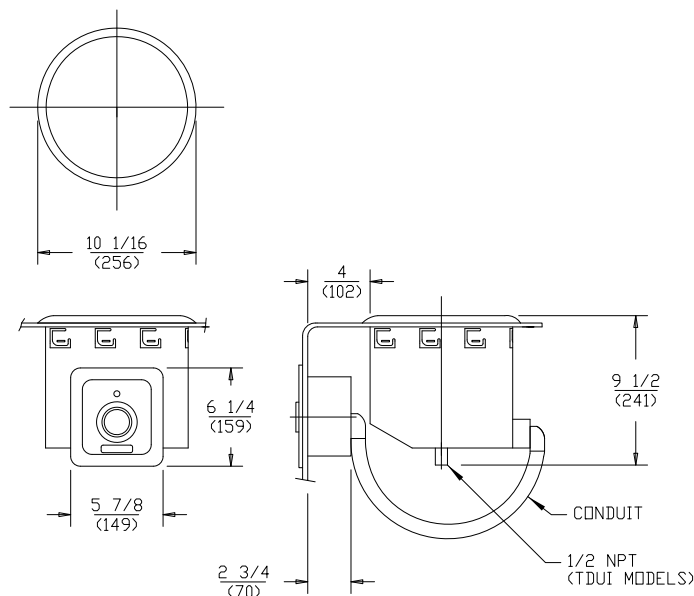
MODEL	VOLTS	WATTS	AMPS	PHASE	FIELD WIRING GAUGE	TEMP. RATING
SS-8TUI	120	825	6.9	SINGLE	14	90°C
SS-8TUI	208	620	3.0	SINGLE	14	90°C
SS-8TUI	240	825	3.4	SINGLE	14	90°C
SS-8TDUI	120	825	6.9	SINGLE	14	90°C
SS-8TDUI	208	620	3.0	SINGLE	14	90°C
SS-8TDUI	240	825	3.4	SINGLE	14	90°C

INSTALLATION INSTRUCTIONS BUILT-IN ROUND FOOD AND LIQUID WARMERS (INSULATED MODELS ONLY) MODELS SS-8TUI, SS-8TDUI

CUTOUT DETAILS INSULATED MODELS ONLY



PRODUCT DIMENSIONS INSULATED MODELS ONLY



CLEARANCES

MINIMUM CLEARANCE REQUIRED UNIT TO THE NEAREST SURFACE			
BACK	SIDE	BOTTOM	FRONT
1 (25)	1 (25)	8 (203)	4 (102)

INSTALLATION INSTRUCTIONS

INSTALLER MUST MEET CONDITIONS OF ACCEPTABILITY OUTLINED BELOW UPON INSTALLATION:

1. Required installation clearances:
Wooden and Metal Installation: DO NOT install closer than 4 inches to front wall, 1 inch to back and side walls, and 8 inches to a surface below the unit.
2. Unit shall be accessible for servicing from the bottom.
3. If storage is to be used underneath the unit, it is recommended that a baffle be placed 8 1/2 inches below the unit to avoid contact with elevated temperatures.

TO FABRICATE:

1. Lay out "cutout" dimensions on countertop and front apron.
2. Lay out and fabricate control panel holes in counter apron using the control box as a template.
3. Cut out holes (Note: "stiffening" around perimeter of the countertop cutout is not normally required).

TO INSTALL:

IMPORTANT - DO NOT disconnect lead wires from the Control Panel when installing.

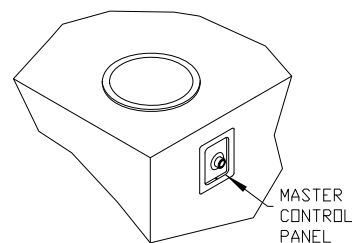
1. Press the self sticking 'gray' gasket material along the perimeter of the appliance mounting flange, about 1/4 inch from the outside edge. Remove the paper backing as the gasket is applied.

RECOMMENDATION: Before final seating of modular section to countertop, apply a bead of silicone adhesive/sealant to the underside of warmer flange.

2. Locate warmer and control box over countertop cutout. Pass control box through countertop cutout and front panel cutout.
3. Insert warmer at an angle and seat warmer onto countertop and the mount control box into front panel cutout.
4. From underneath, insert screwdriver into slots on wellslök flanges and twist outward (clockwise) to tighten unit down to countertop (see detail at right).

5. Mount the control panel to control box using screws supplied.

NOTE: INSTALLATION MUST MEET LOCAL PLUMBING AND ELECTRICAL CODES.



IMPORTANT:
MOUNT APPLIANCE SO THAT THE CONTROL PANEL IS LOCATED TO THE FRONT OF THE FIXTURE.

