

BUILT-IN RECTANGULAR FOOD AND LIQUID WARMERS

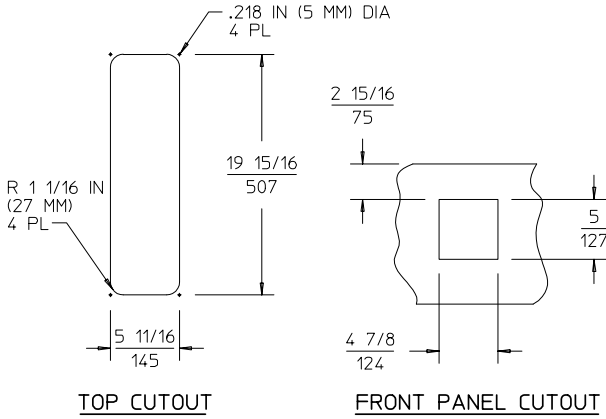
MODELS HMP-6UL, HMP-6ULD

ELECTRICAL

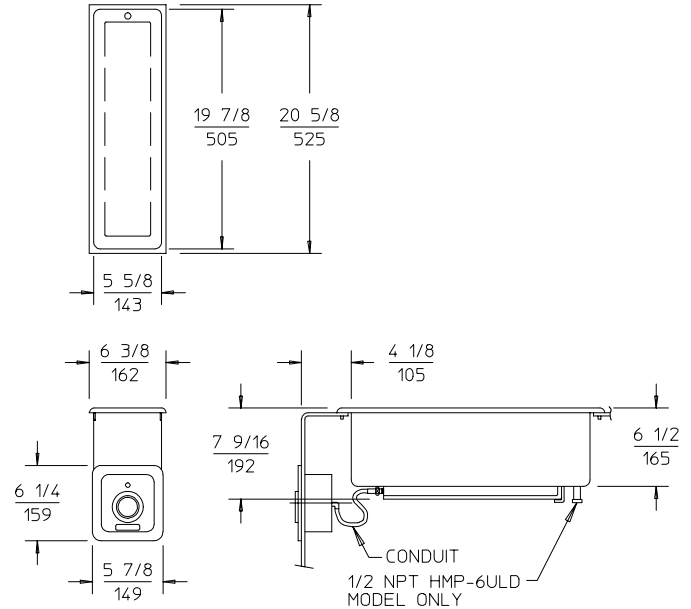
MODEL	VOLTS	WATTS	AMPS	PHASE	FIELD WIRING GAUGE	TEMP. RATING
HMP-6UL	120	750	6.3	SINGLE	14	75°C

MODEL HMP-6ULD HAS THE SAME ELECTRICAL SPECS AS THE STANDARD VERSION.

CUTOUT DETAILS



PRODUCT DIMENSIONS



CLEARANCES

MINIMUM CLEARANCE REQUIRED UNIT TO THE NEAREST SURFACE			
BACK	SIDE	BOTTOM	FRONT
$\frac{1}{(25)}$	$\frac{2}{(51)}$	$\frac{8 \ 1/2}{(216)}$	$\frac{4 \ 1/8}{(105)}$

INSTALLATION INSTRUCTIONS

INSTALLER MUST MEET CONDITIONS OF ACCEPTABILITY OUTLINED BELOW UPON INSTALLATION:

1. This equipment shall be installed in an all metal counter.
2. There must be a minimum of 1 inch clearance between the unit and rear wall of the counter, minimum 4 1/8 inch clearance between the unit and front wall, a minimum 2 inch clearance between the unit and side wall of the counter, and a minimum 8 1/2 inch clearance between the unit and the bottom metal shield.
3. The metal shield must be a minimum No.22 MSG and must be installed a minimum of 8 1/2 inches below the unit to avoid contact with elevated temperatures.

TO FABRICATE:

1. Layout cutout dimensions on countertop and front apron, shown in cutout details above.
2. Cut and/or drill holes as required in countertop and apron.
3. Must be accessible for servicing from the bottom.

TO INSTALL:

- IMPORTANT - DO NOT disconnect lead wires from the Master Control Panel when making installation.
1. Locate warmer and control over the counter cutout. Pass control box through the opening.
 2. Apply a bead of silicone adhesive/sealant to gasket on underside of the warmer flange then seat warmer onto countertop. Properly position.
 3. From underneath attach hex nuts (supplied) to corner screws and tighten.
 4. Attach control box to counter apron and connect service leads. (See wiring requirements labels).
 5. Secure control panel to control box using screws provided.

NOTE: INSTALLATION MUST MEET LOCAL PLUMBING AND ELECTRICAL CODES.